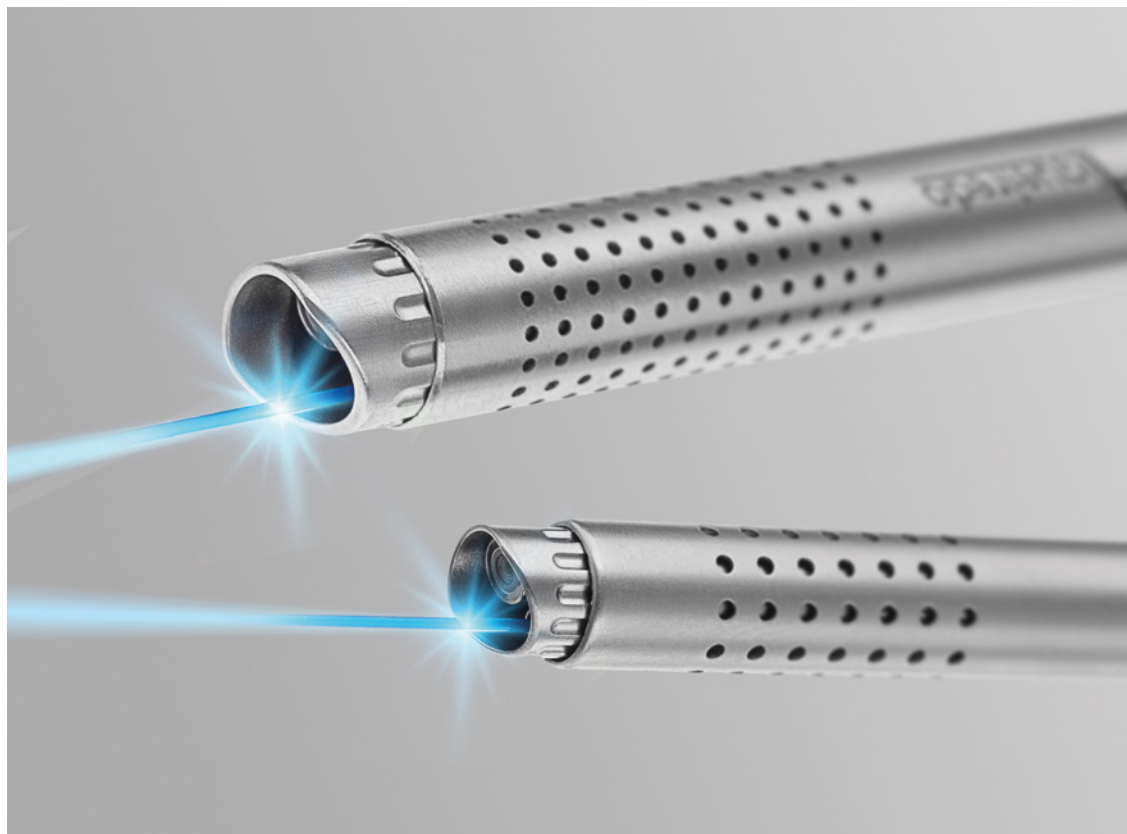


MiLEP 22 Charr.
MiLEP 18.5 Charr.
New High-Flow/Metal Sheath



A revolution in continuous flow

MILEP HIGH FLOW

NEW HIGH-FLOW / METAL SHEATH

— available for  **Enucleoscope 22Charr. and 18.5Charr.**

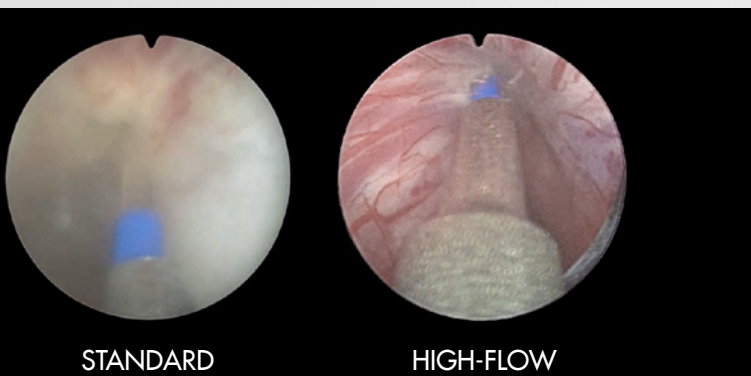
Improved inner sheath in metal designed for higher outflow and clearer view during laser enucleation

A clearer view through improved outflow

In laser enucleation, visibility depends on stable irrigation and efficient outflow. The new High-Flow inner sheath is designed to support a clearer endoscopic field during laser resection, particularly during initial apical dissection and early release. All versions feature a metallic distal tip for increased robustness in case of unintended laser contact, and a standard-flow option is also available.

High flow Inner Sheath available in two sizes

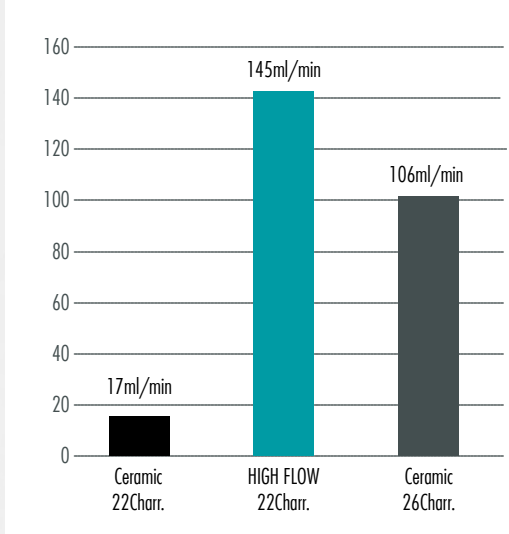
- **22 Charr.** High-Flow Metal for slim HoLEP
- **18.5 Charr.** High-Flow Metal for ultra slim HoLEP
- **22 Charr.** Standard Metal for slim HoLEP



Slim HoLEP in Vivo evaluation Dr. Patrick Rein - Switzerland

BENEFITS

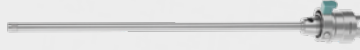
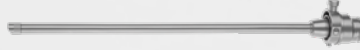
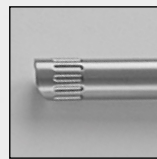
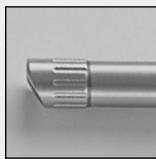
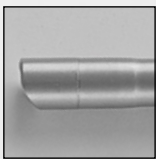
- + **Better outflow**
- + **More stable continuous flow**
- + **Better view**
- + **Supports controlled dissection**
- + **Robust distal tip**



Evaluation realized by Dr. Figuereido with all outflow holes from outer sheath closed.

22
CHARR.

18.5
CHARR.

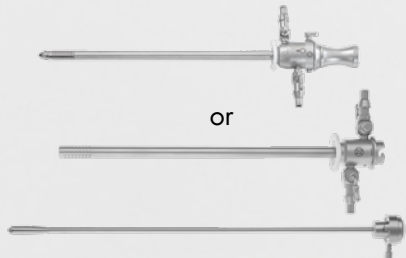


MiLEP Resectoscope Inner Sheath 19 Charr.
253-000-363

MiLEP HIGH-FLOW Resectoscope Inner Sheath 19 Charr.
253-901-232

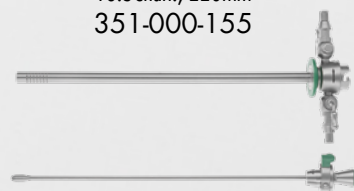
MiLEP HIGH-FLOW Resectoscope Inner Sheath 16.5 Charr.
253-901-282

compatible with:
FELIPE Continuous Flow Sheath
22Charr., 220mm
253-901-220



Continuous Flow outer Sheath, Rotatable 22 Charr., 220mm and Obturator
253-000-352 + 253-000-555

compatible with:
Continuous Flow Outer Sheath
18.5Charr., 220mm
351-000-155



and Obturator
351-000-186



RZ Medizintechnik GmbH

Unter Hasslen 20/22
78532 Tuttlingen, Germany

Phone: +49 7462 9470-0

sales@rz-medizintechnik.com
www.rz-medizintechnik.com

